

Light efficiency:

49 Lumen/Watt

Light quality:

CRI: 78.9

Color temperature:

16919 K

Output: 9614 lm

Peak: 8557 cd

Power: 197.6 W

PF: 1.0



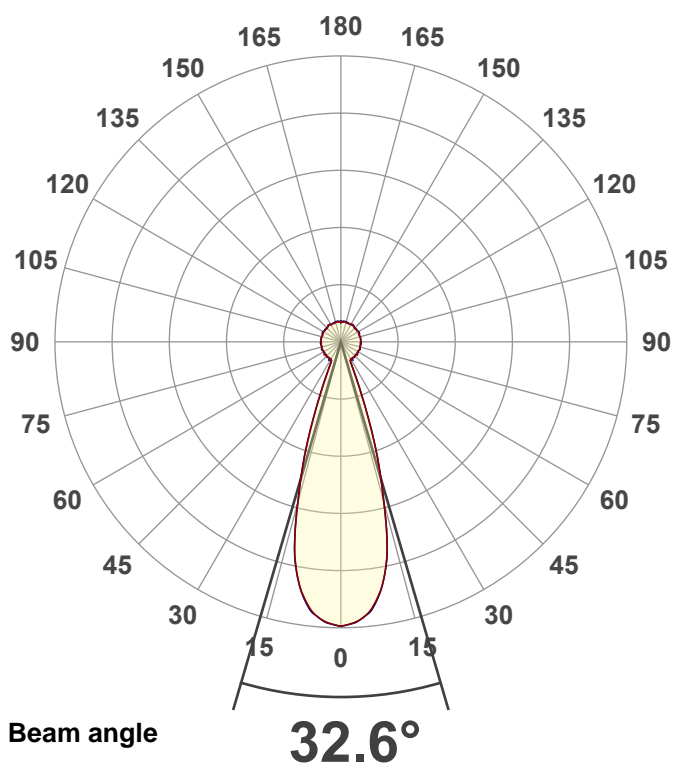
Product name:

Hydro Flex L7 (Zoom Out Green)

Item number:

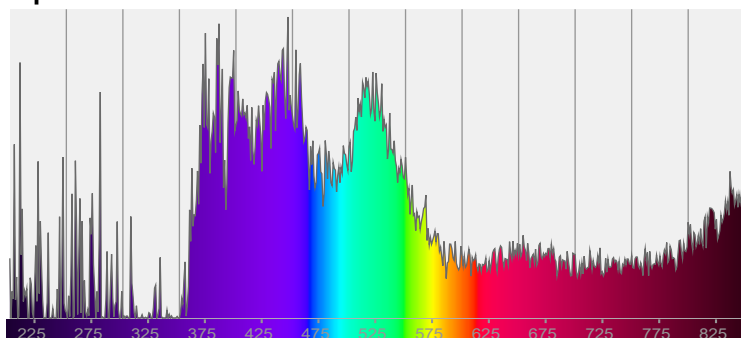
Date and time:

8/25/2025 1:08:17 PM



CIE 1931
x: 0.235
y: 0.291

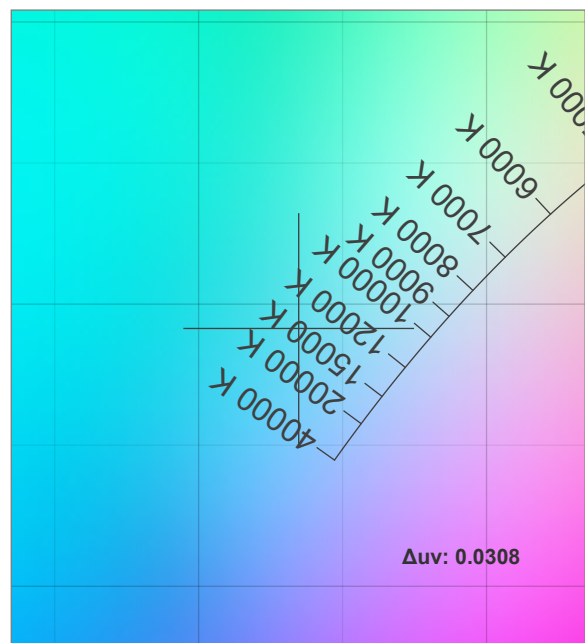
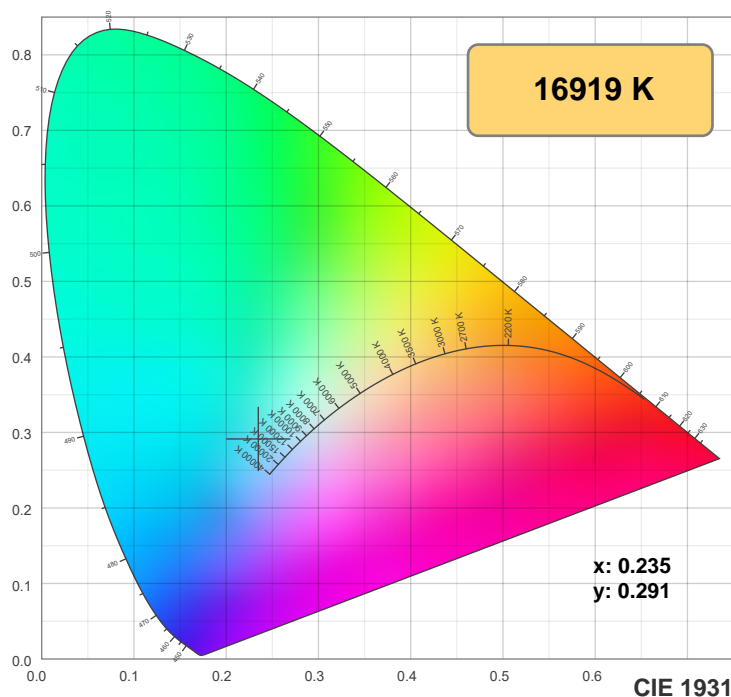
Spectra



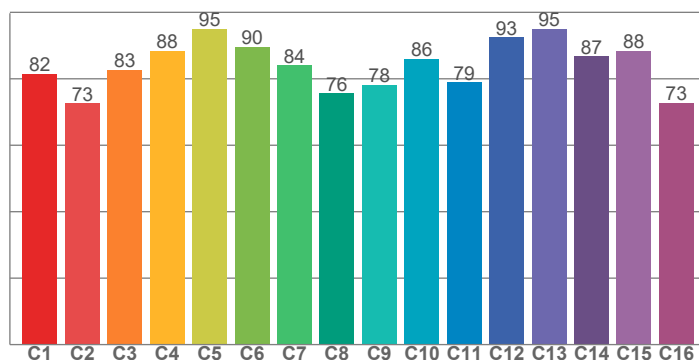
Power

Voltage: 116 V
Current: 1.70 A
Frequency: 0 Hz

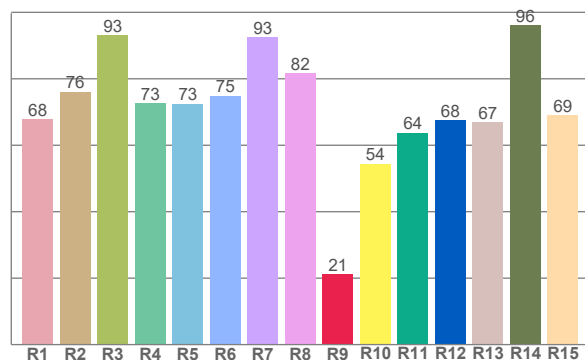
Color details



TM-30: 84.8



CRI: 78.9 (R1-R8)



CRI R values, only R1-R8 are used to calculate final CRI value

R1	R2	R3	R4	R5	R6	R7	R8	R9	R10	R11	R12	R13	R14	R15
67.7	76.1	93.1	72.5	72.5	74.9	92.6	81.6	21.2	54.4	63.8	67.6	66.9	96.1	69.1

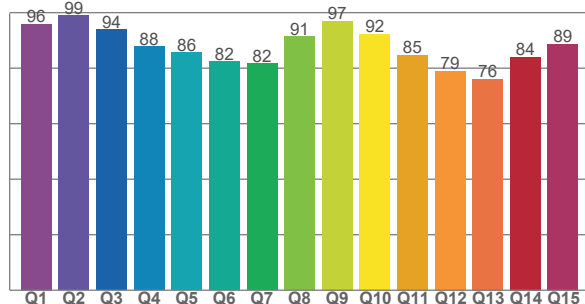
TM30 C values, 16 binned values out of total of 99 C values

C1	C2	C3	C4	C5	C6	C7	C8	C9	C10	C11	C12	C13	C14	C15	C16
81.5	72.6	82.7	88.5	95.1	89.7	84.0	75.7	78.2	86.0	79.0	92.5	95.0	86.7	88.4	72.8

CQS Q values

Q1	Q2	Q3	Q4	Q5	Q6	Q7	Q8	Q9	Q10	Q11	Q12	Q13	Q14	Q15
96.0	98.9	93.9	87.8	85.6	82.5	81.7	91.4	97.0	92.3	84.8	78.9	76.1	84.0	88.7

CQS: 86.3



Color parameters

Color temperature	Color rendering index	Red component	Color fidelity	Color gamut	Color quality scale	Color coordinate cie 1931	Color coordinate cie 1931	Color coordinate	Color coordinate	Color deviation from black body
CCT	CRI	CRI R9	TM30 Rf	TM30 Rg	CQS	x	y	u	v	Δuv
16919 K	78.9	21.2	84.8	92.2	86.3	0.235	0.291	0.156	0.290	0.0308

TM-30 details

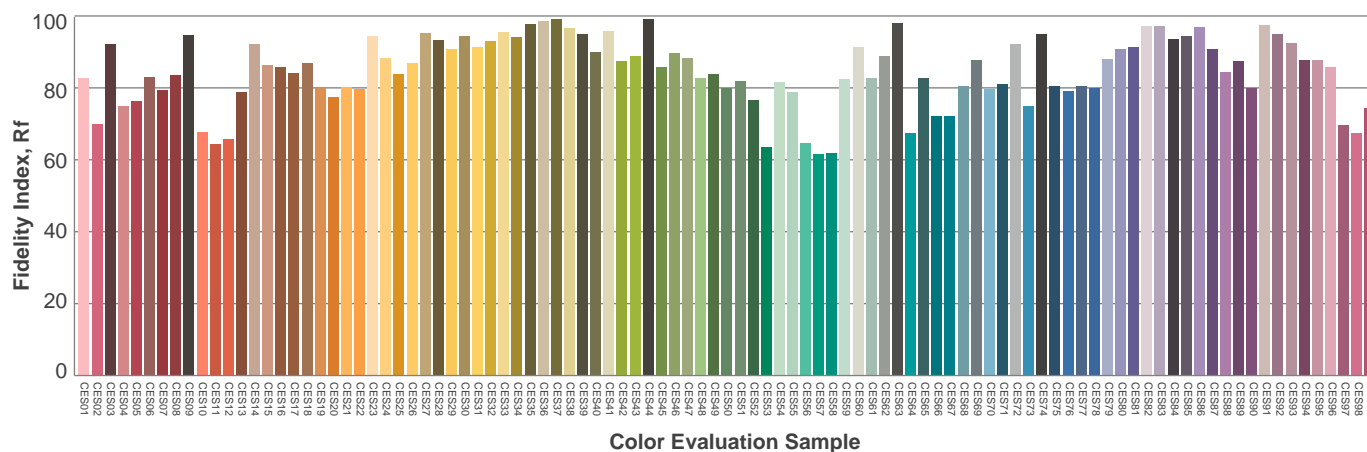
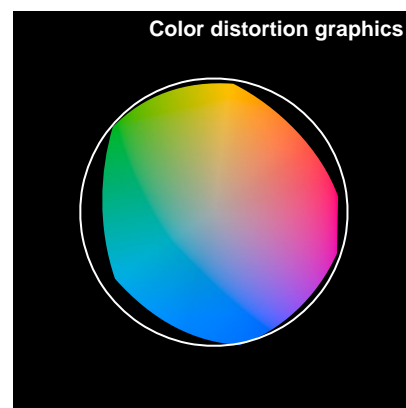
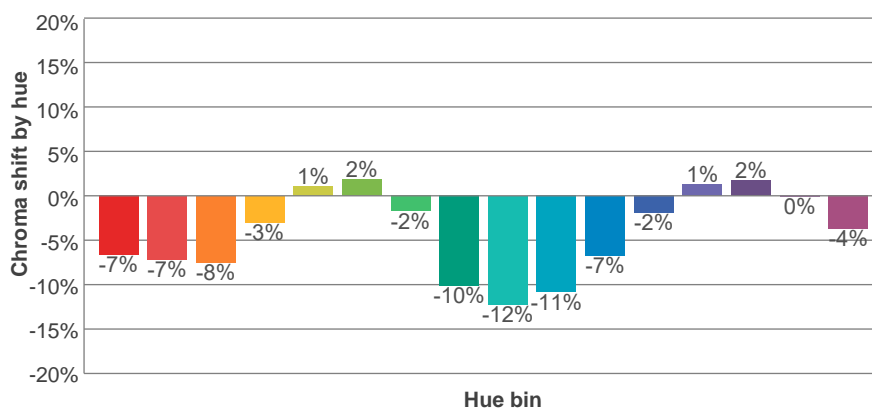
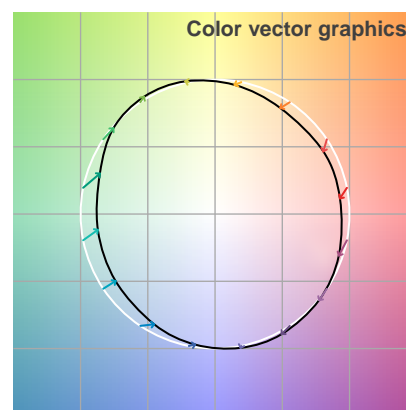
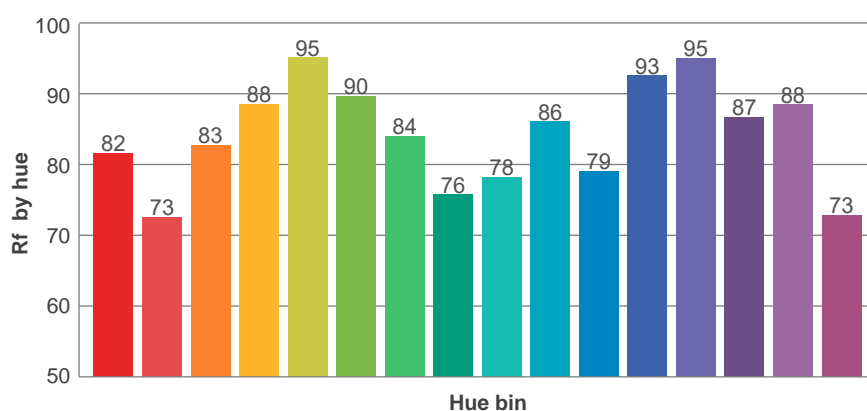
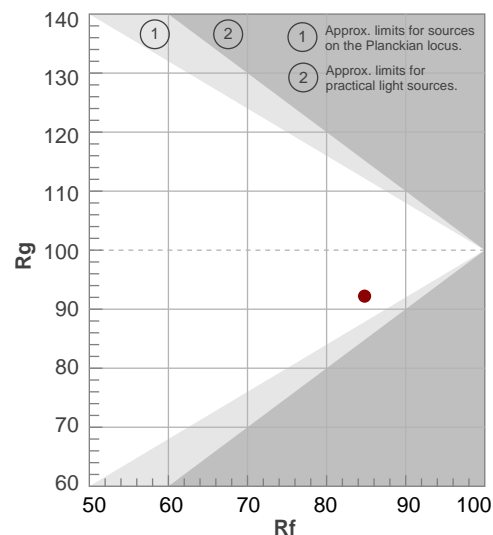
Rf 84.8

Fidelity index Rf

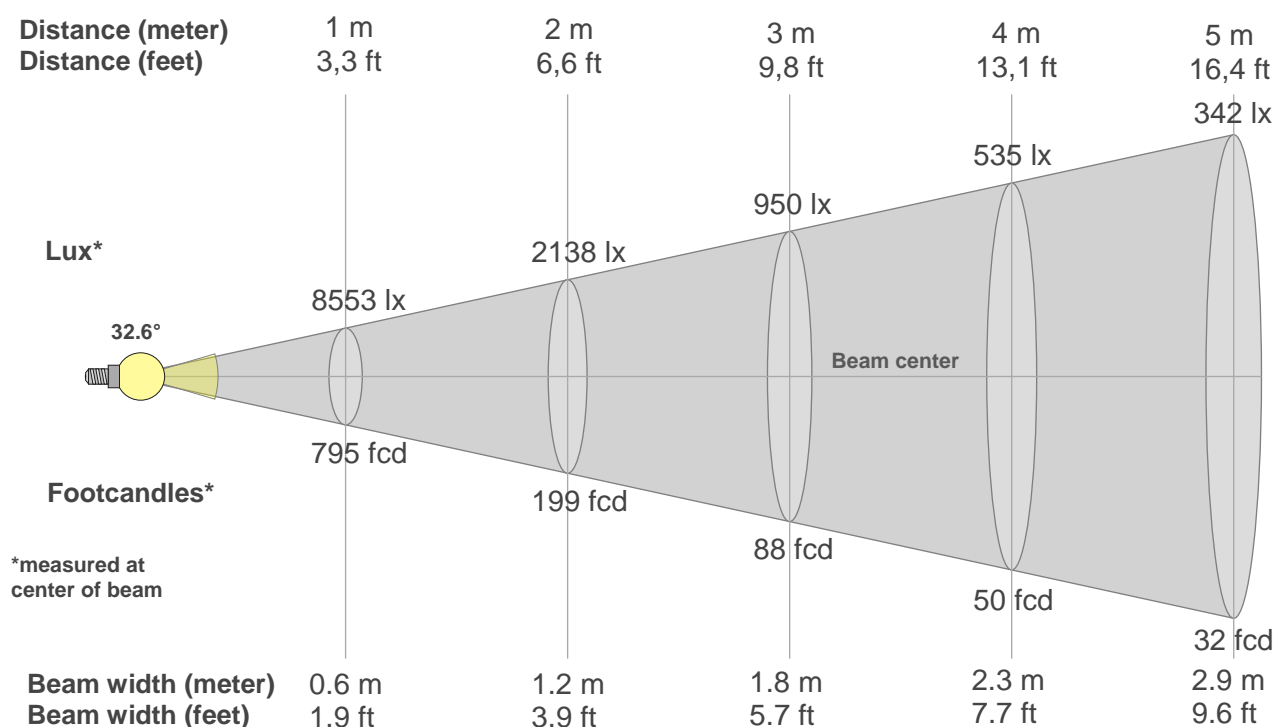
Rg 92.2

Gamut index Rg

Hue Bin	Ri	Shifts (%)	
		Chroma	Hue
1	82	-7%	-7%
2	73	-7%	-6%
3	83	-8%	3%
4	88	-3%	4%
5	95	1%	2%
6	90	2%	-4%
7	84	-2%	-11%
8	76	-10%	-13%
9	78	-12%	-5%
10	86	-11%	0%
11	79	-7%	8%
12	93	-2%	4%
13	95	1%	-1%
14	87	2%	-8%
15	88	0%	-10%
16	73	-4%	-12%



Beam details



Beam intensities from 1-20m

1m	2m	3m	4m	5m	6m	7m	8m	9m	10m	11m	12m	13m	14m	15m	16m	17m	18m	19m	20m
3.3ft	6.6ft	9.8ft	13.1ft	16.4ft	19.7ft	23ft	26.2ft	29.5ft	32.8ft	36.1ft	39.4ft	42.7ft	45.9ft	49.2ft	52.5ft	55.8ft	59.1ft	62.3ft	65.6ft
8553lx	2138lx	950lx	535lx	342lx	238lx	175lx	134lx	106lx	86lx	71lx	59lx	51lx	44lx	38lx	33lx	30lx	26lx	24lx	21lx
794.6fc	198.7fc	88.3fcd	49.7fcd	31.8fcd	22.1fcd	16.2fcd	12.4fcd	9.8fcd	7.9fcd	6.6fcd	5.5fcd	4.7fcd	4.1fcd	3.5fcd	3.1fcd	2.7fcd	2.5fcd	2.2fcd	2fcd

Intensities in 0° c-plane

0°	2°	4°	6°	8°	10°	12°	14°	16°	18°	20°	22°	24°	26°	28°	30°	32°	34°	36°	38°
8553	8490	8374	8163	7808	7313	6625	5620	4460	3406	2339	1496	945	667	620	616	596	603	602	591
100%	99%	98%	95%	91%	85%	77%	66%	52%	40%	27%	17%	11%	8%	7%	7%	7%	7%	7%	7%

Intensities in 90° c-plane

0°	2°	4°	6°	8°	10°	12°	14°	16°	18°	20°	22°	24°	26°	28°	30°	32°	34°	36°	38°
8553	8498	8378	8191	7837	7326	6645	5622	4460	3416	2341	1526	967	661	618	622	631	634	604	602
100%	99%	98%	96%	92%	86%	78%	66%	52%	40%	27%	18%	11%	8%	7%	7%	7%	7%	7%	7%

Intensities in 180° c-plane

0°	2°	4°	6°	8°	10°	12°	14°	16°	18°	20°	22°	24°	26°	28°	30°	32°	34°	36°	38°
8553	8490	8374	8163	7808	7313	6625	5620	4460	3406	2339	1496	945	667	620	616	596	603	602	591
100%	99%	98%	95%	91%	85%	77%	66%	52%	40%	27%	17%	11%	8%	7%	7%	7%	7%	7%	7%

Intensities in 270° c-plane

0°	2°	4°	6°	8°	10°	12°	14°	16°	18°	20°	22°	24°	26°	28°	30°	32°	34°	36°	38°
8553	8498	8378	8191	7837	7326	6645	5622	4460	3416	2341	1526	967	661	618	622	631	634	604	602
100%	99%	98%	96%	92%	86%	78%	66%	52%	40%	27%	18%	11%	8%	7%	7%	7%	7%	7%	7%

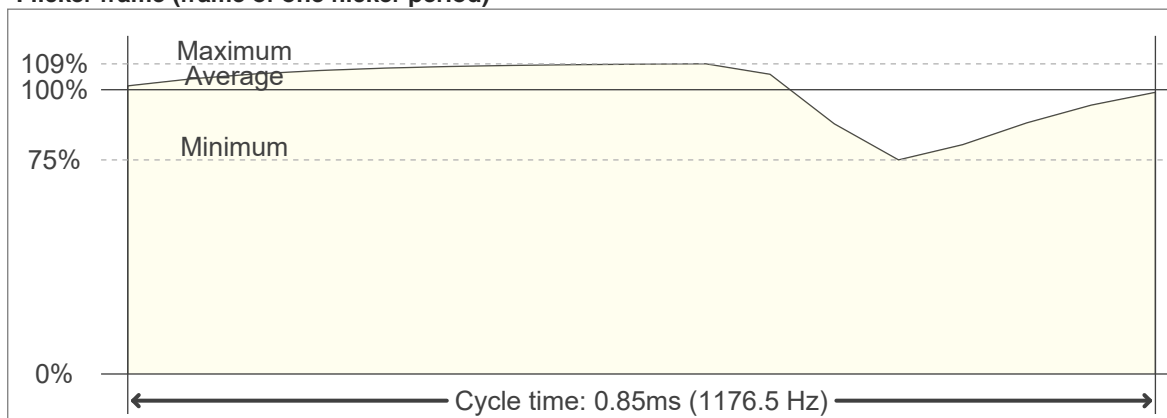
Beam angle 50%	Field angle 10%	Cutoff angle 2,5%	Intensity ratio in 120° cone	Intensity ratio in 90° cone
32.6°	49°	360°	41.1%	32.8%

Flicker

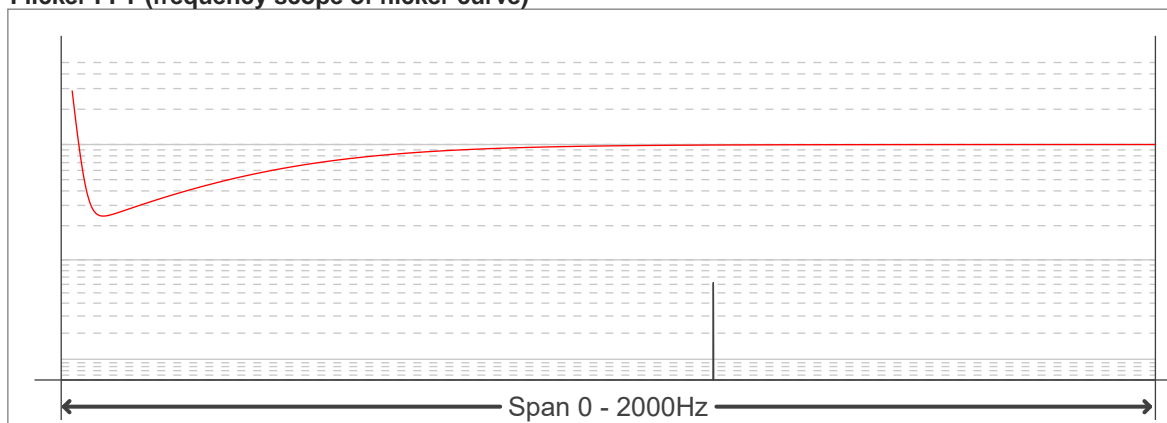
Flicker curve (complete sampled flicker signal)



Flicker frame (frame of one flicker period)



Flicker FFT (frequency scope of flicker curve)



Flicker results:

Flicker frequency:		1176.47 Hz	
Flicker index:	0.04	JA8/10 40Hz	0.05 %
Flicker percentage:	18.58 %	JA8/10 90Hz	0.06 %
SVM: (Visual flicker)	0.13	JA8/10 200Hz	0.06 %
PstLM	0	JA8/10 400Hz	0.07 %
Mp	0.03	JA8/10 1000Hz	1.03 %

Flicker conditions:

Sample rate:	20000 samples/second
--------------	----------------------